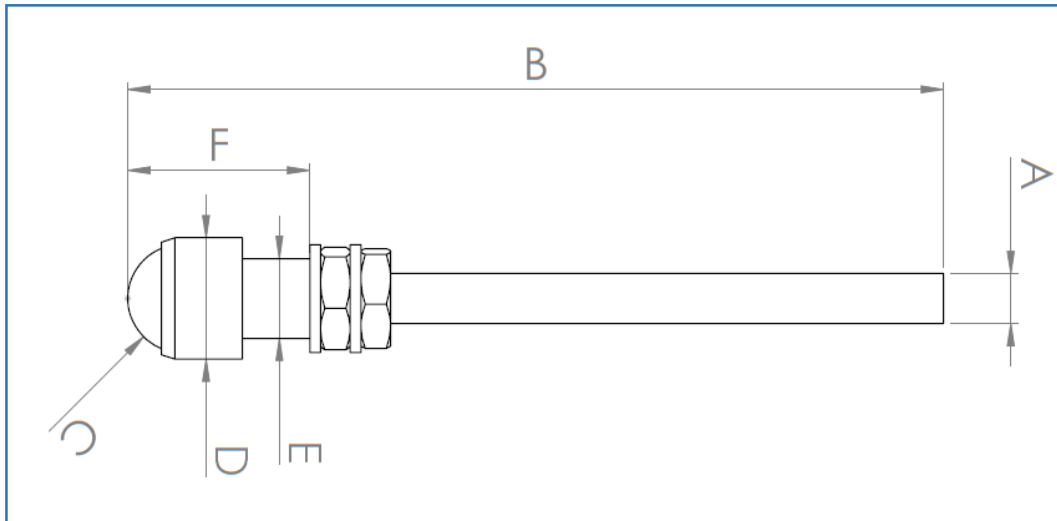






These “caster ball wheels” contain a spherical metal ball positioned within a holder. The ball has 360° of freedom and is normally used to balance a robot. It has low friction with the surface and it does not prevent the robot movement. We offer ball casters that can be easily incorporated into chassis designs and ideal for competition robots that come in a variety of sizes.



Model	Picture	A (mm)	B (mm)	C (mm)	D (mm)	E (mm)	F (mm)	Weight (gr)
CW-08		3.5	61	8	9	6	14	10
CW-12		4.5	65	12	13	7.5	21	21
CW-16			65	16	19	10	26	31
CW-25			65	25	26	10	35	64