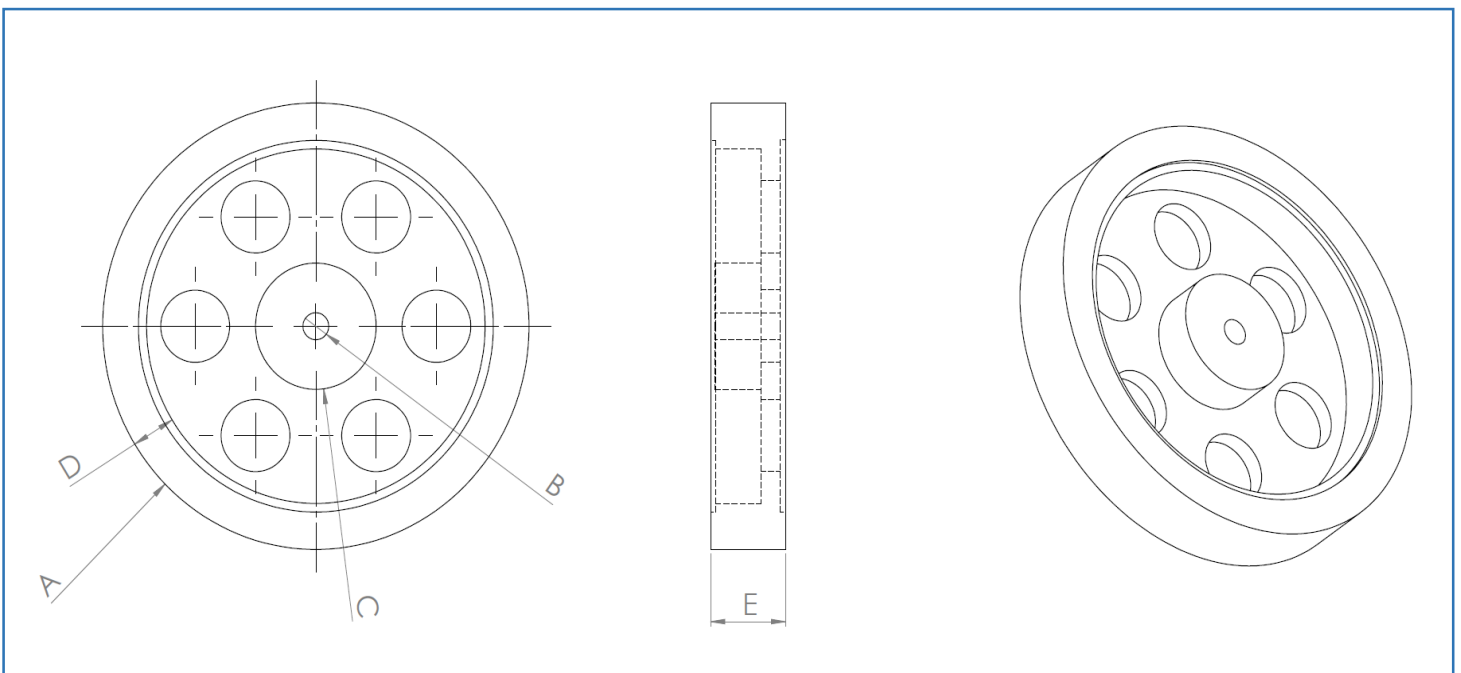











They are simple, efficient and useful wheels for robots, especially Labirint Robot, Maze Robot and Rescue Robots as they are solid and robust. Moreover, they have rubber coated with appropriate friction. These wheels are balanced with less wobble. The wheel body is shiny and there are some holes on the surface which helps to be lighter. Moreover the holes can be used as an encoder. They have Allen screws on the central shaft.



<i>Model</i>	<i>Picture</i>	<i>A (mm)</i>	<i>B (mm)</i>	<i>C (mm)</i>	<i>D (mm)</i>	<i>E (mm)</i>	<i>Weight (gr)</i>
AW-303		30	3	9	6	7.5	7
AW-403		40	3	11	5	8.5	12
AW-404		40	4	11	5	8.5	12
AW-503		50	3	14	5	8	17
AW-504		50	4	14	5	8	12
AW-506		50	6	14	5	8.5	11
AW-704		70	4	17	6	9	31
AW-705		70	5	17	6	9	41
AW-706		70	6	17	6	9	30